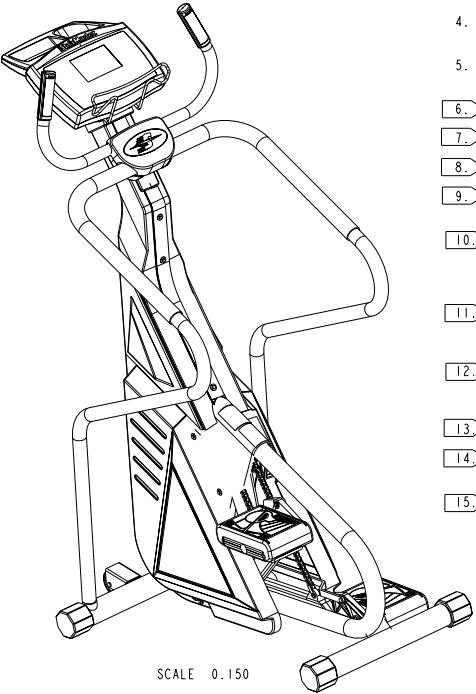


BOM FOR ASSEMBLY 18001			BOM FOR ASSEMBLY 18001		
COMPONENT	DESCRIPTION	QTY	COMPONENT	DESCRIPTION	QTY
12297	ASSY, HANDLE, UPPER, 4600, GEN II	1	21514	COVER,MID	1
13580	WASHER, #8 SAE FLAT	2	21518	bell, poly-v, 430j6	1
13597	ASSY, MAIN POWER, 4400CL	1	21519	PULLEY, SPRING, 4200/4400	2
14123	BATTERY, 6V	1	21529	bell, htd, 8mm, 80mm	1
18002	weldment, neck, 4600	1	21530	HUB, ECCENTRIC, 2400/4400	1
18006	BRACKET, CONSOLE, LEFT, 4600	1	21531	shaft, first red	1
18007	BRACKET, CONSOLE, RIGHT, 4600	1	21578	GROMMET, NECK, 2400/4400	1
18008	INSERT, HANDRAIL, 4600	1	21590	BRACE, ALTERNATOR, 4400 PT6/CL	1
18012	COVER, LOWER, RH, 4600	1	21592	SPACER, ALTERNATOR, 4400 PT/CL	1
18013	COVER, LOWER, LH, 4600	1	21597	PULLEY, ALTERNATOR, 1.044 DIA	1
18014	WELDMENT, MAIN FRAME, 4600	1	21600	bearing, ball, 17mm x 30mm	2
18016	assy, handrail, left, w/grip, 4600	1	21616	INSERT, NECK, 2400/4400	1
18017	assy, handrail, right, w/grip, 4600	1	21654	key, woodruff, #605, .188, .625	1
18019	extrusion, handrail, 4600	1	21657	WASHER, THRUST, .688 X .125	3
18020	WASHER, .250, NYLON	2	21673	INSTRUCT., INSTALL INJ MOLD CVR	1
18021	SPACER, CONSOLE, 4600	1	21755	ASSY, CHARGING PS, INTERNATIONAL, 3-PIN	1
18024	COVER, UPPER, RH, 4600	1	21774	PIN, HITCH	2
18025	COVER, UPPER, LH, 4600	1	21793	ASSY, PEDAL, RH, CL, SYS, V2	1
18027	ASSY, CONSOLE KNOB, 4600	1	21794	ASSY, PEDAL, LH, CL, SYS, V2	1
18028	SCREW, .250-20 NC X 1.75 SOC HD CAP	4	22026	SCREW, 1/4-20 X 1.00, HEX HD CAP	8
18030	SHIELD, NECK, TOP	1	22027	WASHER, .250 SPLIT LOCK	2
18031	SHIELD, NECK, BOTTOM	1	22029	NUT, .375-16, NYLON INSERT	2
18049	DECAL, COVER, SIDE, 4600 CL	2	22030	WASHER, 3/8 USS FLAT	2
18072	RIVET, PERM.	19	22032	NUT, 5/16-18 NC NYLON INSERT HEX	2
20006	SPROCKET, BS14 #41 CHAIN	1	22036	NUT .25/20 NYLON INSERT	10
20008	LINK, MASTER, #41	1	22047	WASHER, .250, FLAT	7
20157	LINK, MASTER, #40	2	22070	WASHER, .312 SPLIT LOCK	2
20185	MOUNT, SHOCK	2	22075	WASHER, .312 USS FLAT	10
20198	BEARING, CLUTCH	2	22093	SCREW, .312-18 X .75, HEX HD CAP	6
20196	BEARING, NEEDLE 1 ID X1-1/4 OD X1/2	2	22116	SCREW, 1/4-20 X 2.50, HEX HD CAP	2
20197	WASHER, THRUST	8	22138	WASHER, .250 INTERNAL LOCK	6
20198	BEARING, THRUST	4	22140	WASHER, OD1.00, ID.63	2
20199	CHAIN, STEP	2	22141	SNAPRING OD.715, ID.595	2
20205	ALTERNATOR	1	22143	SNAPRING, .375	2
20206	SNAPRING, OD1.125, ID.906	1	22150	SCREW, #10-24 X .38 ZINC PLATED	1
20213	RING, SNAP, .75	2	22175	SCREW, .250-20 X 3.00, HEX HD CAP	1
20214	SNAPRING, .375	2	22191	WASHER, SHOULDER, .38	2
20423	TYRAP, 1/8 X 7.515	2	22257	SCREW, 3/8-16 X 1.50, HEX HD CAP	1
20473	TYRAP, 1/8 X 4	1	22258	SCREW, .375-16 X 2.00, HEX HD CAP	2
20507	POWER CORD, EUROPEAN	1	22272	PAD, PEDAL, LH	1
20574	ADAPTER, HANDRAIL, 4000	2	22273	PAD, PEDAL, RH	1
20576	SPROCKET, 13T	2	22276	SCREW, #6 SELF TAPPINGX.625 HEX OR TORX	2
20768	CONNECTOR, SPRING CHAIN	2	22326	PIN, CLEVIS	1
20785	ASSY, DRIVE SHAFT, SPRING PIN	1	22347	chain, transmission	2
20787	HUB, DRIVE, PM	1	22375	DECAL, S/N, BC, 1.6 X 1.5	1
21017	DECAL, CAUTION, 4000PT/CT, ENGLISH	1	22516	BRACKET, SPEED SENSOR, 4400 CL	1
21093	SPRING, PETAL RETURN	2	22517	DISK, SPEED, SENSOR, 4400 CL	1
21146	GROMMET, GRO-1-UL	2	22663	SCREW, #6 X .50, PHIL TYPE T	4
21192	RETAINER, PEDAL CHAIN	1	22847	RIVET, KIT(10 PER)	1
21273	DECAL, DISTRIBUTOR, GERMAN	1	22867	MANUAL, OWNER'S, 4600/C40	1
21298	LINK, DOUBLE PITCH W/SLEEVE	2	22878	SET SCREW, .25-28X.38	1
21349	ASSY, ARM, LEVELING	2	22983	WASHER, SHOULDER, .25 ID	4
21350	ASSY, ARM, PEDAL, L.H., .PB	1	23054	NUT, #8-32, NYLON INSERT	5
21351	ASSY, ARM, PEDAL, R.H., .PB	1	23354	SNAP RING, 17MM	1
21366	WASHER, THRUST, .63 ID	4	23638	WASHER, SPACER	2
21445	ASSY, SPEED SENSOR, CLIMBING SYS, CL	1	23719	pin, roll, 3/16x1.5	1
21447	ASSEMBLY, RESISTOR, CLIMBING SYSTEMS, CL	1	23842	SPROCKET, 8MM, HTD, 80 TOOTH	1
21448	SCREW, .375-16 X 4.50, HEX HD CAP	1	23853	TOOL, REMOVAL, COVER FASTENERS	1
21449	SCREW, .25-20X 4.00 HEX	1	24000	PULLEY, HTD, POLY-V, 8.00 DIA	1
21462	WASHER, FLAT, .375	4	24271	SCREW, .312-18 X 3.00, HEX HD CAP	2
21463	SNAPRING, .375, SS	2	24279	TYRAP, .14 X 11.0	1
21468	BRCKT, MNTING, PCB, 4400CL, WB	1	24323	CLIP, CABLE, ADHESIVE BACKING	4
21487	DECAL, LEG LEVELING	1	24326	DECAL, DOM COMPLIANCE	1
21489	BRACKET, MOUNTING, BATTERY	1	24666	bracket, mounting, covers	2

BOM FOR ASSEMBLY 18001		
COMPONENT	DESCRIPTION	QTY
24747	bearing, needle, 17x23x12	2
24983	assy, pcb, final	1
25064	LABEL, WARNING, BC-1, PWR CONNECT	1
25079	SCREW, #8 X 3/8 LG, TYP A, PAN/HD, PH	2
25454	SCREW, .25-20 X .75, HEX	4
25978	WHEEL, 3 IN. DIA.	2
27828	ASSY, CABLE, C40 CL	1
27839	SUPPRESSOR, FERRITE TOROID	1
(27775)	CONSOLE ASSEMBLY, C40	1



TOLERANCES		UNLESS OTHERWISE SPECIFIED:	
.X ±.1	ANGLES:	1. DO NOT SCALE DRAWING	
.XX ±.03	BENT 90°	2. ALL DIMENSIONS ARE IN INCHES	
.XXX ±.010	MACHINED ±0°30'	3. ALL DIMENSIONS APPLY BEFORE PLATING OR COATING	
CONFIDENTIAL & PROPRIETARY		4. REMOVE ALL BURRS BREAK SHARP EDGES .020 MAY ALL MACHINED SURFACES	
THIS DOCUMENT IS THE PROPERTY OF STAIRMASTER SPORTS/MEDICAL PRODUCTS, INC. IT MAY NOT BE REPRODUCED IN WHOLE OR IN PART, PROVIDED TO THIRD PARTIES, OR USED FOR ANY PURPOSE OTHER THAN THE PERFORMANCE OF WORK FOR STAIRMASTER, WITHOUT WRITTEN AUTHORIZATION. ALL RIGHTS ARE RESERVED INCLUDING COPYRIGHTS.		5. ALL VIEWS 3RD ANGLE PROJECTION	

Digitally signed by CATHEY CLARK on 2003.02.12 16:32:29 -0800 Reason: Document released

REVISIONS			
REV	DESCRIPTION	DATE	DRAFTER
A	RELEASED FOR PRODUCTION PER ECO #4529	7/20/99	RH
B	REVISED PER ECO #7106	8/23/99	BCH
C	REVISED PER ECO #7073	9/13/99	RH
D	REVISED PER ECO #7204	10/26/99	RH
E	REVISED PER ECO #7206	11/11/99	KF
F	REVISED PER ECO #7475	6/14/00	RH
G	REVISED PER ECO #7421	8/11/00	RH
H	REVISED PER ECO #7845	5/8/00	RH
I	REVISED PER ECO #8087	8/28/01	RH
J	REVISED PER ECO #8175	11/28/01	RH
K	REVISED PER ECO #8344	4/30/02	RH
L	REVISED PER ECO #8488	1/21/03	RH
M	REVISED PER ECO #8509	1/28/03	RH

NOTES:

- PART NUMBER 22272 AND 22273 COMPLETE KIT NUMBER 18054.
- APPLY BEARING GREASE PRIOR TO ASSEMBLY.
- LUBRICATE WITH GREASE BEFORE ASSEMBLING: STEP CHAIN CONNECTION POINTS, PEDAL ARM SHAFTS, LEVELING ARM SHAFTS, SPRING PULLEY SHAFTS, AND PEDAL SHAFTS.
- LUBRICATE WITH 10W-30 WT OIL: STEP CHAIN, RETURN SPRING, TRANSMISSION CHAIN AND SPRING PULLEY EXTERIOR LIGHTLY
- CENTER 6 GROOVE POLY-V BELT IN MIDDLE OF THE ALTERNATOR AND POLY-V PULLEYS.
- .020 MAXIMUM AIR GAP BETWEEN SENSOR (21445) AND DISK (22517).
- MODEL LEVEL ITEM, REFERENCE MODEL LEVEL BOMS.
- MODEL LEVEL ITEM (DOMESTIC DECAL SHOWN ON BOM FOR REFERENCE).
- MODEL LEVEL ITEM (GERMAN DISTRIBUTOR DECAL SHOWN ON BOM FOR REFERENCE).
- MODEL LEVEL ITEM (EUROPEAN SHOWN FOR REFERENCE . POWER CORD (EUROPE, AUSTRALIA, ITALY, UK, SWISS ONLY) IS FOR INTERNATIONAL APPLICATIONS AS ADDITIONAL NON-INSTALLED PART TO BE USED WITH BATTERY CHARGER (EUROPEAN SHOWN FOR REFERENCE).
- MODEL LEVEL ITEM. BATTERY CHARGER FOR RECHARGING ONLY. PACKAGED SEPARATELY AND SHIPPED WITH MACHINE PER MANUFACTURING GUIDLINES ( INTERNATIONAL SHOWN FOR REFERENCE) (SEE NOTE 10).
- MODEL LEVEL ITEM. OWNERS MANUAL (ENGLISH SHOWN FOR REFERENCE) AND FASTENERS (22847 & 23853) TO BE PACKAGED SEPARATELY AND SHIPPED WITH MACHINE PER MANUFACTURING GUIDLINES.
- MODEL LEVEL ITEM. 120V MACHINES ONLY.
- WIND WIRE HARNESS 27828 THROUGH FERRITE (27839) FOUR TIMES AND SECURE WITH TYRAP (20423).
- TORQUE TO 21 FT. LB.

FINISH CHART		
P/N	DASH #	FINISH
	-00	NO FINISH
	-01	WHITE POWDERCOAT
	-02	TEXTURED BLACK POWDERCOAT
	-03	WRINKLE BLACK POWDERCOAT
	-04	GLOSS BLACK POWDERCOAT
	-05	OUTSIDE PROCESS, SEE NOTES

\*NO SUFFIX ALSO DENOTES NO FINISH

PROOF/PUR MGR	
WFO, ENGR	
ESOM, ENGR	
ESOM, MGR	
MATERIAL	N/A
FINISH	

SEE CHART

SIZE	RELEASED FOR PRODUCTION	ECO NO.	18001
D	ECO 4529		
SCALE: 0.077	PLOT DATE: 1/28/01	SHEET 1	OF 6

PRO/ENGINEER GENERATED DRAWING  
FILE NAME: 18001.DWG

8 7 6 5 4 3

D

C

B

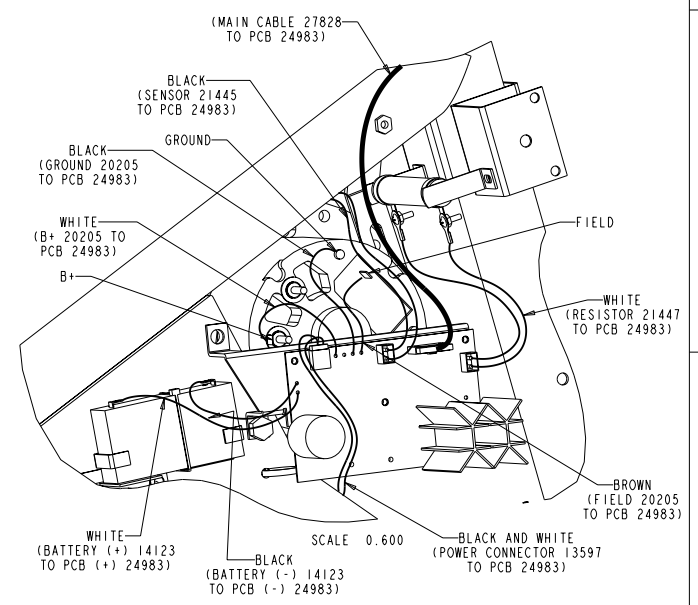
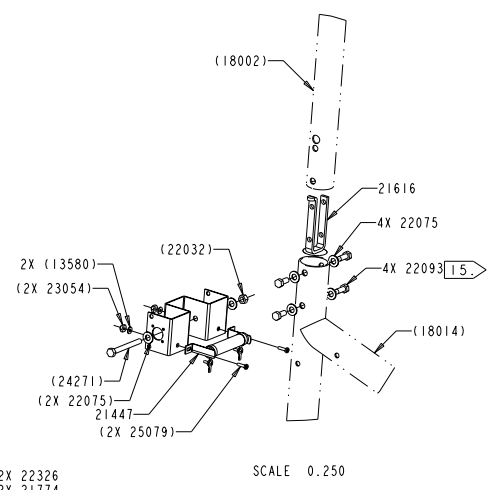
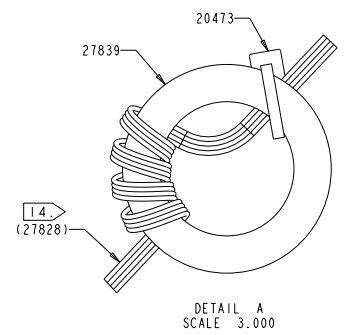
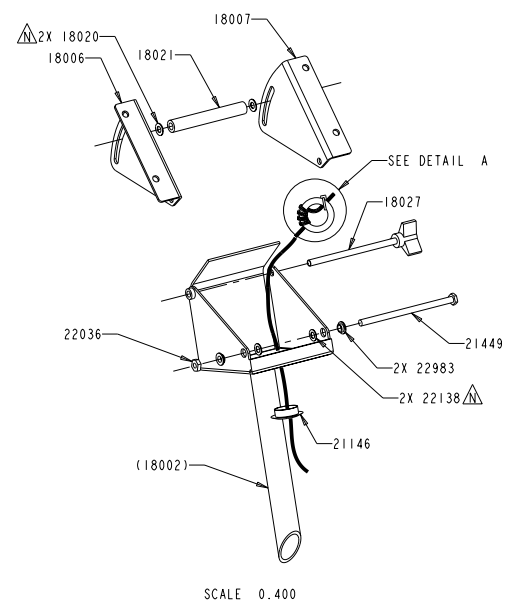
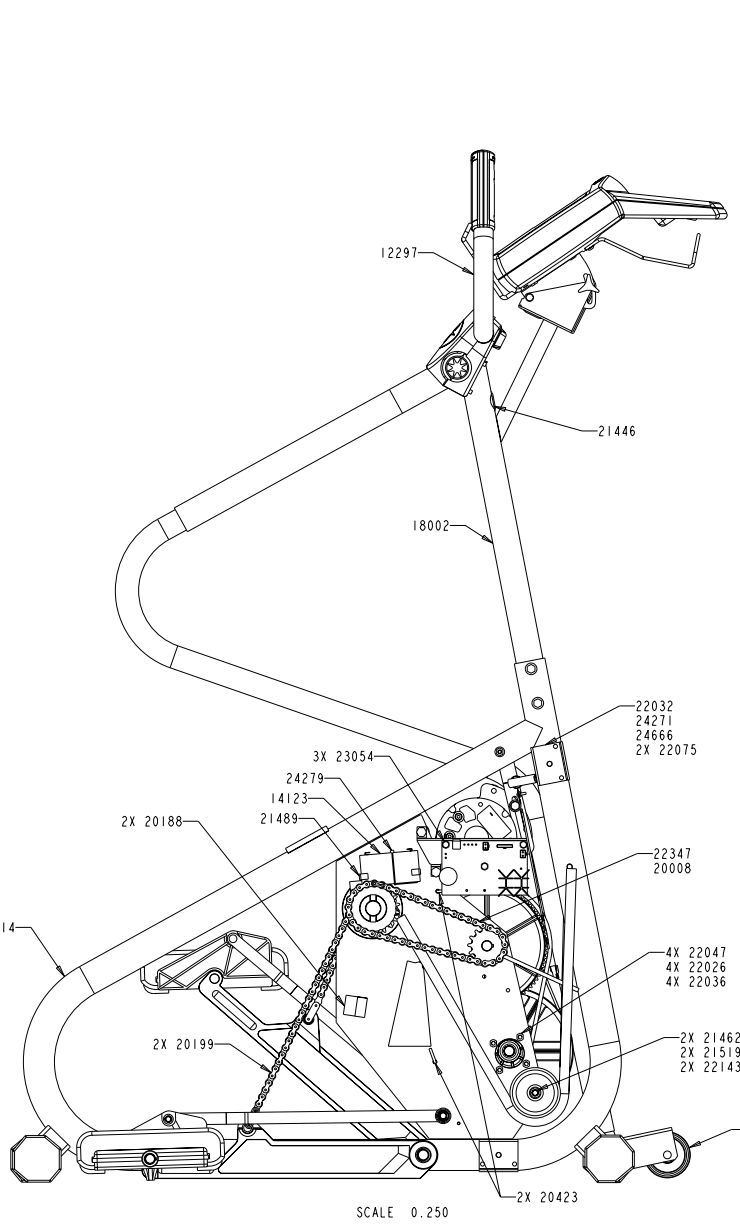
A

D

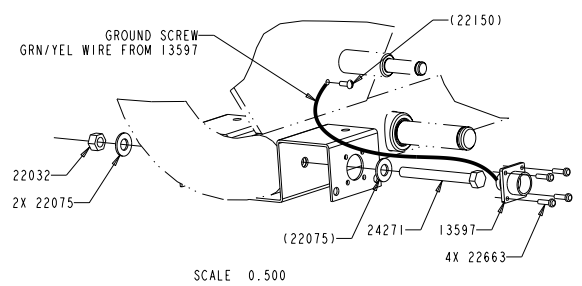
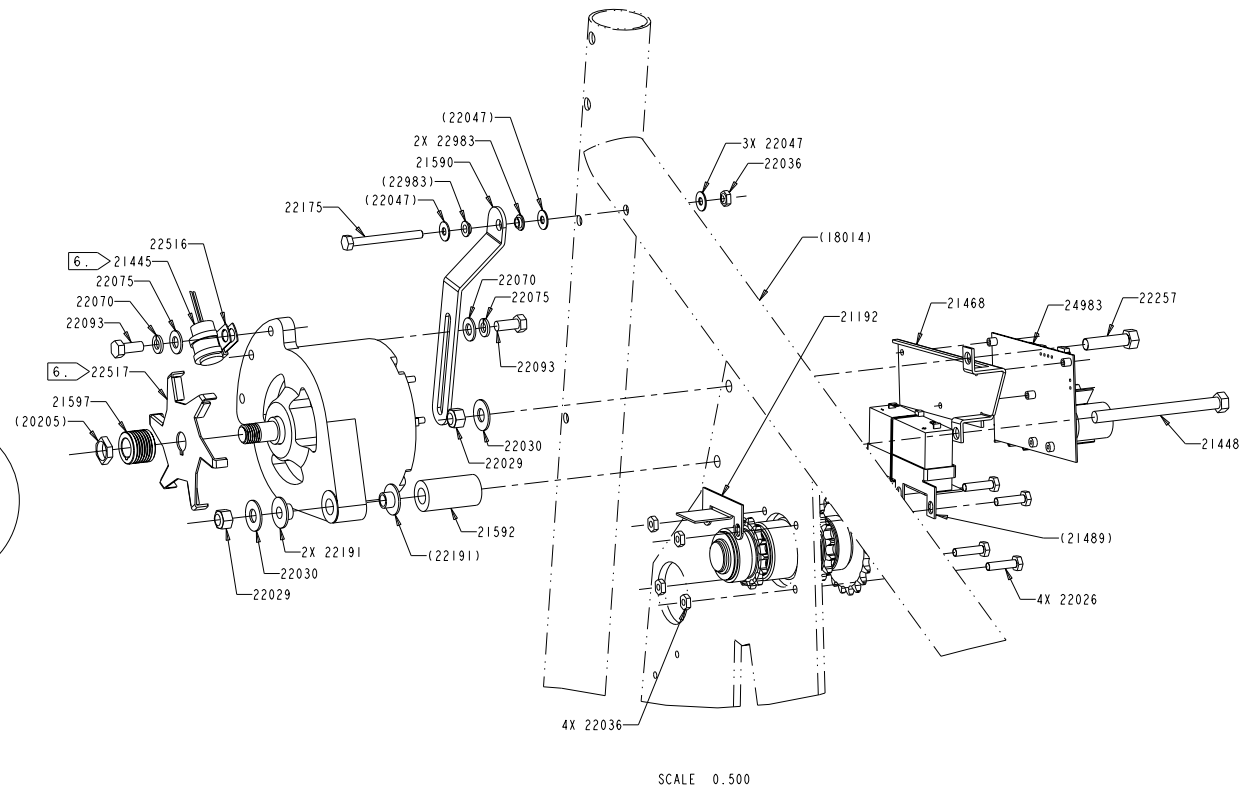
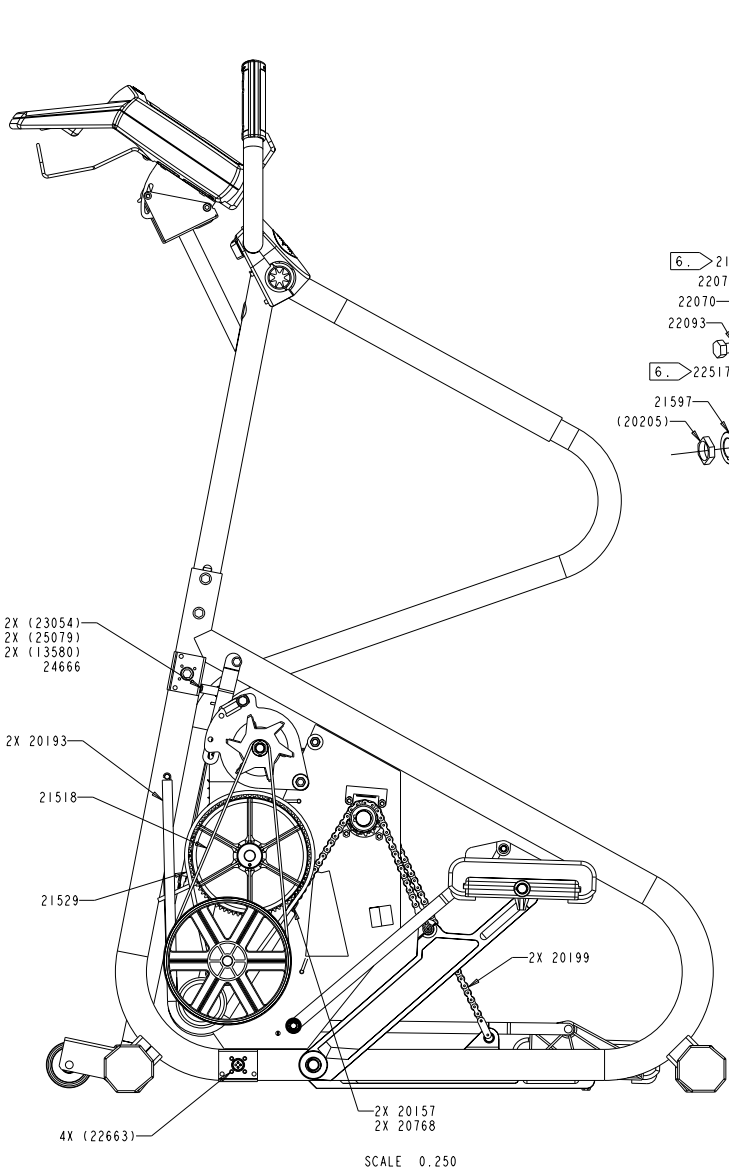
C

B

A



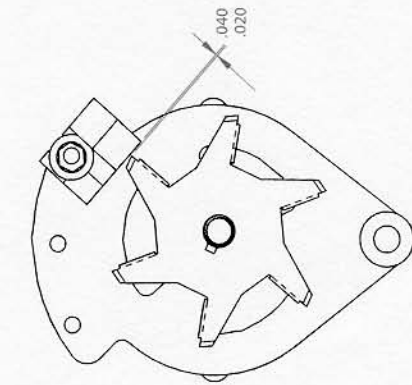
8 7 6 5 4 3



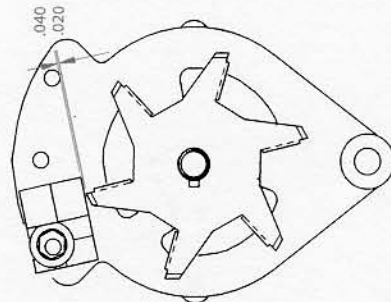
# SPEED SENSOR REPLACEMENT INSTRUCTIONS

- STEP 1. DISCONNECT THE SENSOR FROM THE POWER BOARD PCB.
- STEP 2. REMOVE THE ORIGINAL SENSOR, CLAMP, AND HARDWARE SECURING THE SENSOR TO THE ALTERNATOR.
- STEP 3. DISCARD THE PARTS REMOVED IN STEP 2.
- STEP 4. PLACE NEW SPEED SENSOR ON THE ALTERNATOR, ADJUST THE DISTANCE FROM THE EDGE OF THE DISK FAN TO THE END OF THE SENSOR, AND SECURE WITH NEW HARDWARE INCLUDED IN THE KIT AS SHOWN IN DIAGRAM 1.

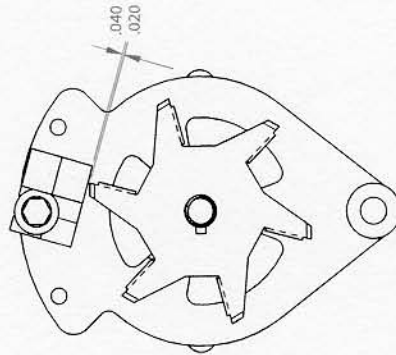
**NOTE: PLACE A SMALL DROP OF LOCTITE ON THE SCREW THREADS BEFORE TIGHTNING.**



STEPPER



U/R916



ELLIPTICAL

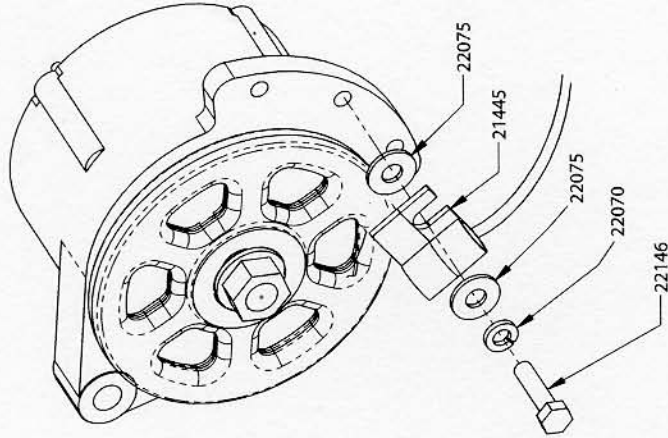
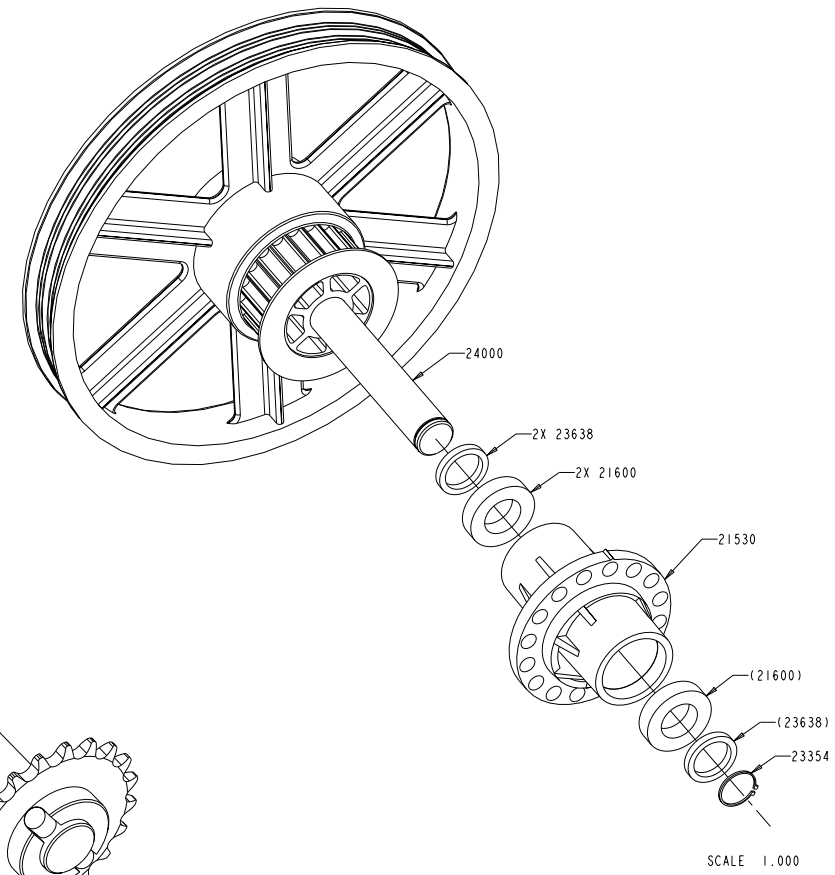
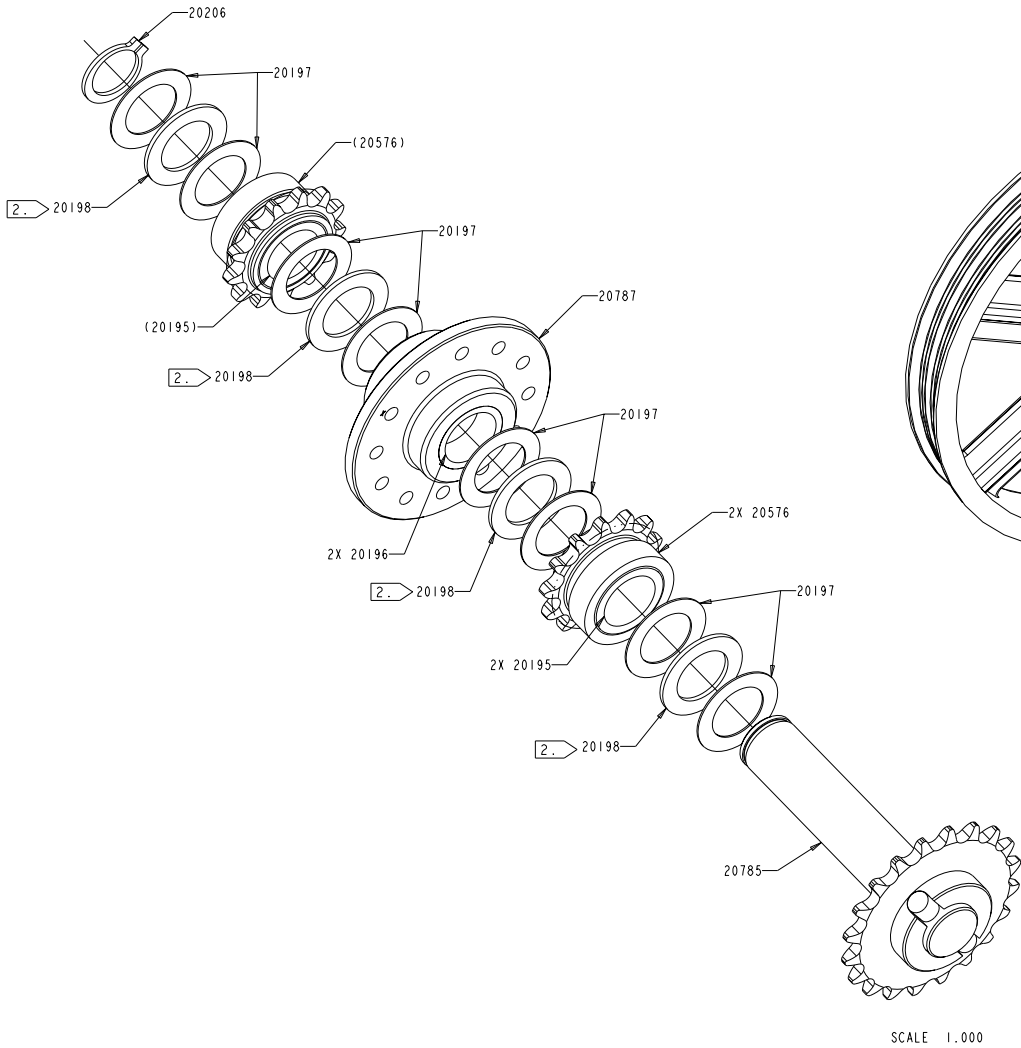


DIAGRAM 1  
(ELLIPTICAL ALTERNATOR SHOWN AS EXAMPLE)

- IMPORTANT: 1. A FLAT WASHER MUST BE BETWEEN THE SENSOR AND ALTERNATOR, SO THE FAN BLADE MAY BE ALIGNED PROPERLY UNDER THE SENSOR.**
2. BOTTOM OF SENSOR TO EDGE OF FAN BLADE DISTANCE (CREDIT CARD THICKNESS).
  3. TORQUE BOLT TO 70 in/lbs (8 Nm) WHEN SECURING THE SENSOR, OTHERWISE SENSOR WILL CRACK.



SCALE 1.000

SCALE 1.000

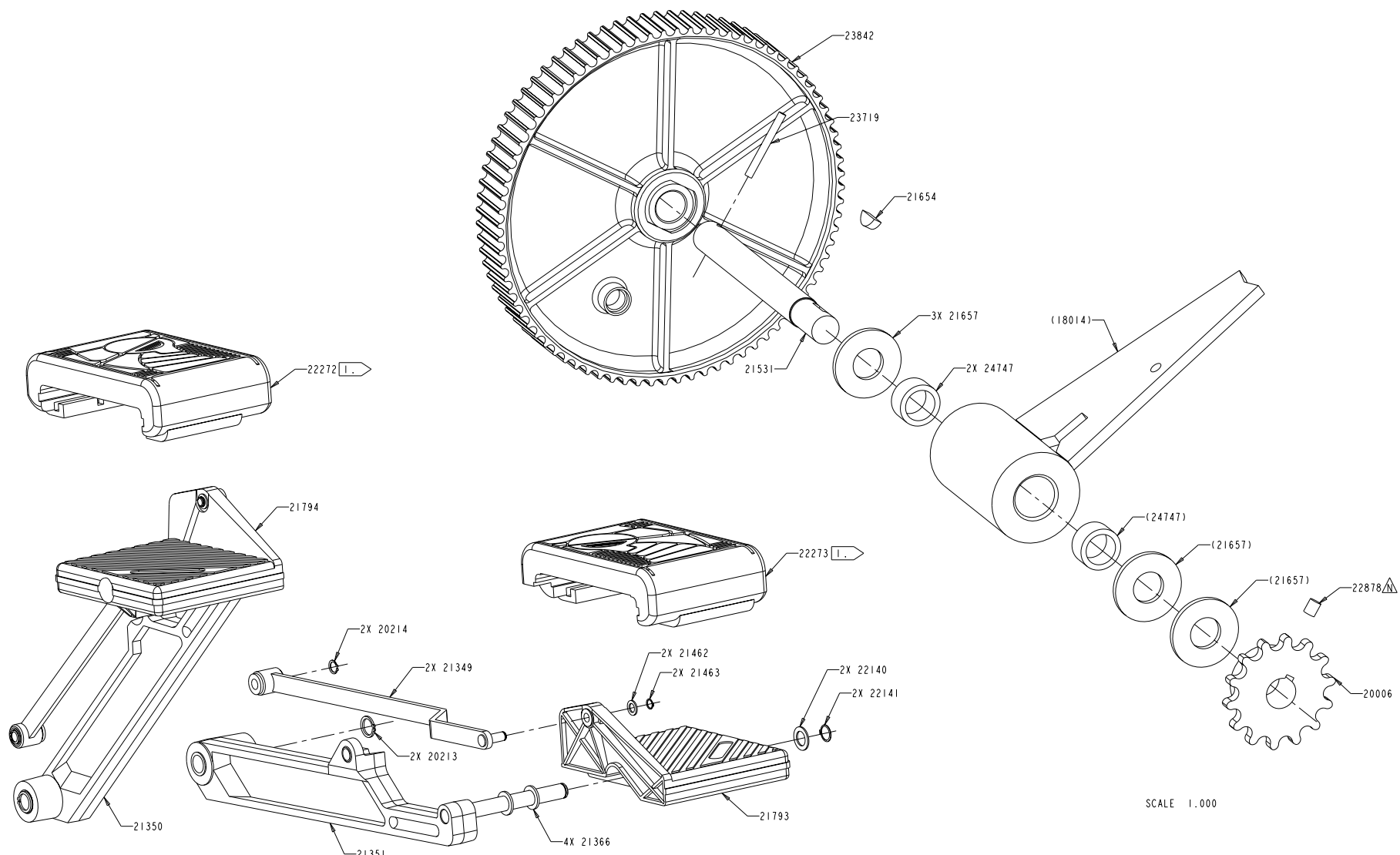
8 7 6 5 4 3

D

C

B

A



SCALE 0.500

SCALE 1.000

CONFIDENTIAL & PROPRIETARY THIS DOCUMENT IS THE PROPERTY OF STAINMASTER SPORTS/MEDICAL PRODUCTS, INC. (SEE SHEET 1 FOR FULL TEXT)			SIZE <b>D</b>	DWG NO: <b>18001</b>	VER. 1	REV. 1
DRAWN	CHECKED	DATE	SCALE: 0.077	PLOT DATE: 1/28/03	SHEET 5 OF 6	
PRO/ENGINEER GENERATED DRAWING FILE NAME: 18001.DWG						

8 7 6 5 4 3

8 7 6 5 4 3 1

D

C

B

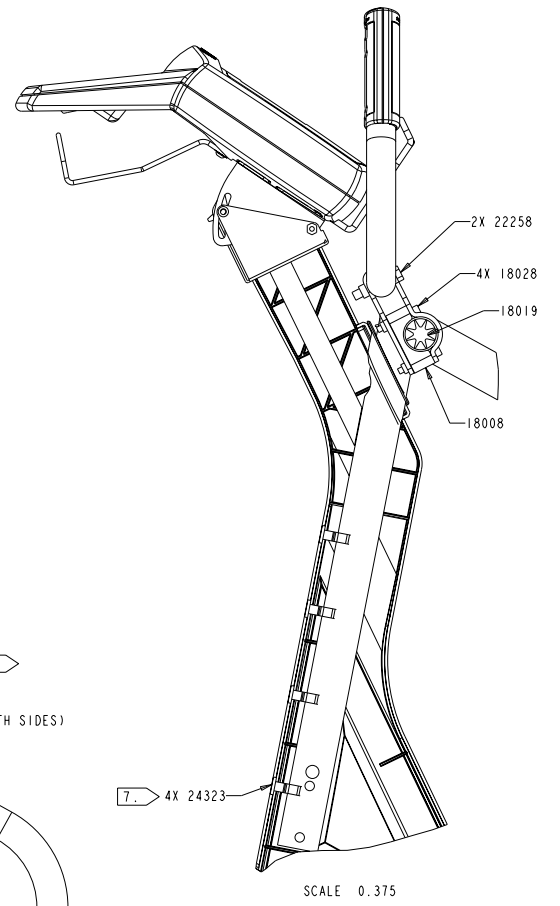
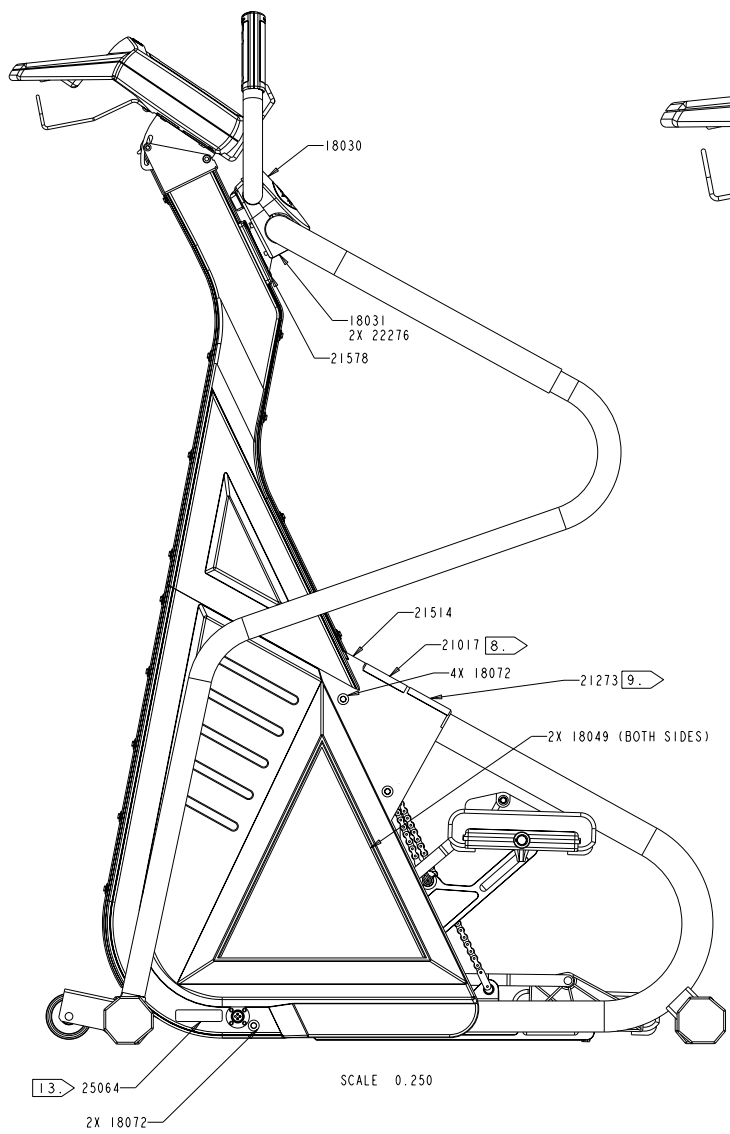
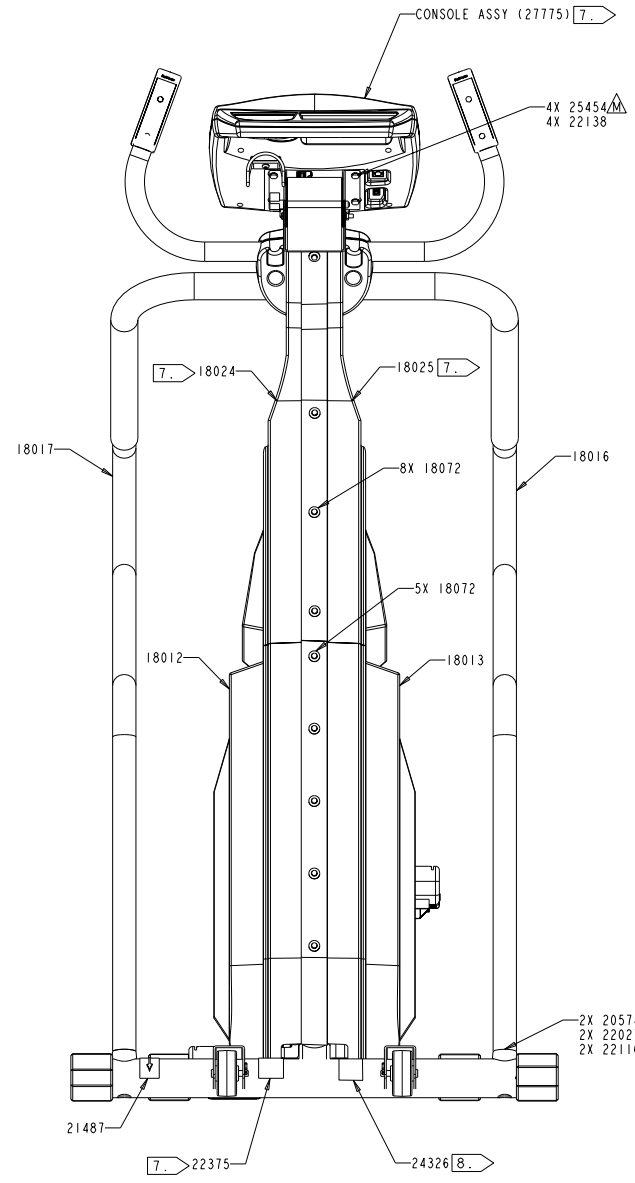
A

D

C

B

A

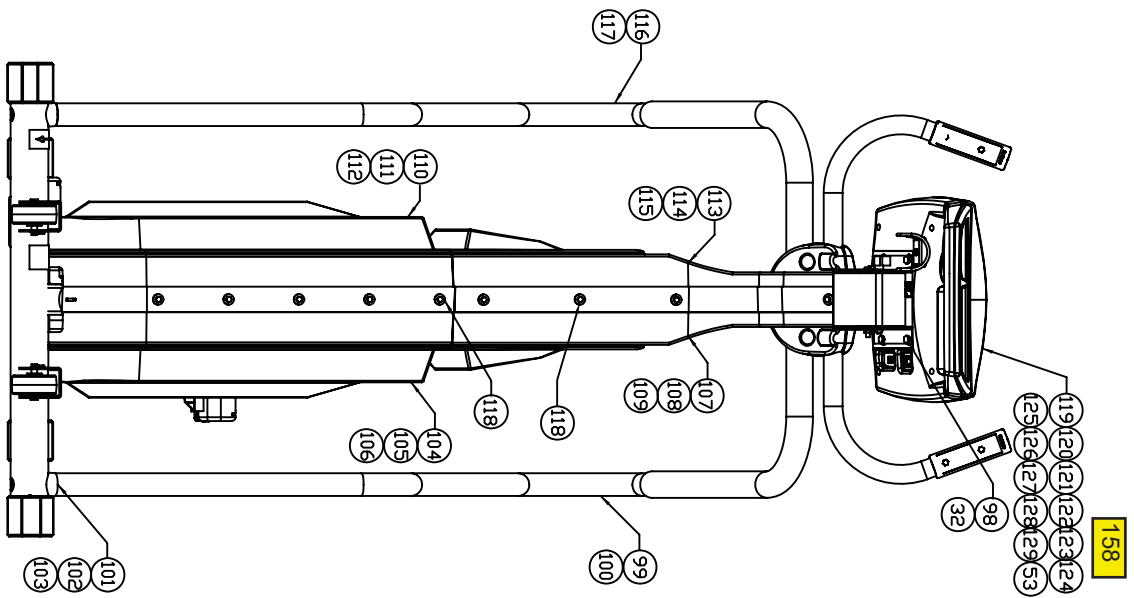


CONFIDENTIAL & PROPRIETARY THIS DOCUMENT IS THE PROPERTY OF STAINMASTER SPORTS/MEDICAL PRODUCTS, INC. (SEE SHEET 1 FOR FULL TEXT)		<b>StainMaster</b>	SIZE <b>D</b>	DWG NO: <b>18001</b>	VER. REV.
DRAWN	SCALE: 0.077	PLT DATE: 1/28/03	SHEET 6 OF 6		
PRO/ENGINEER GENERATED DRAWING FILE NAME: 18001.DWG					

8 7 6 5 4 3 1

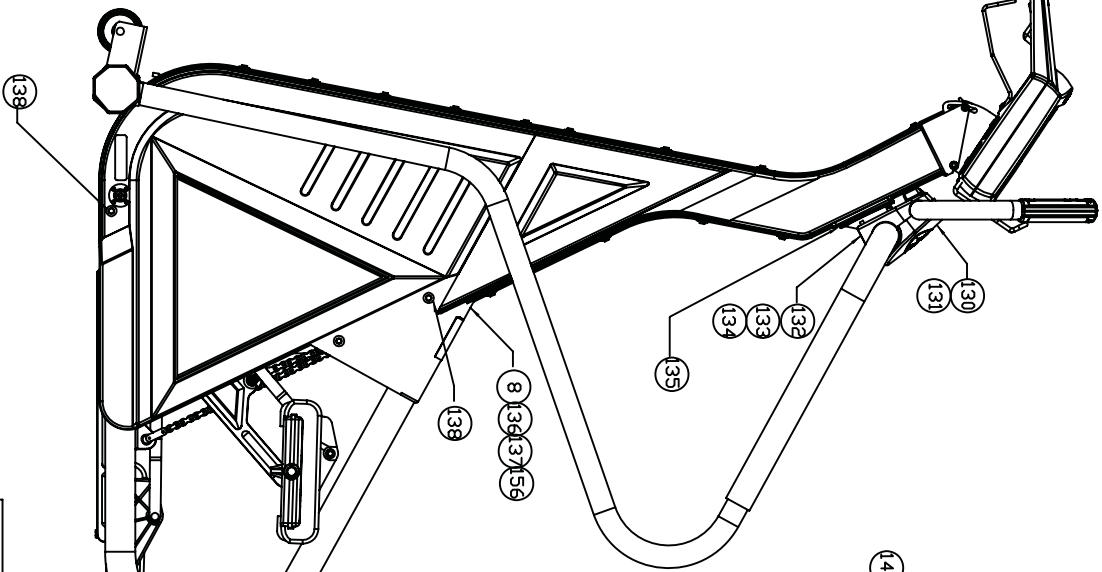




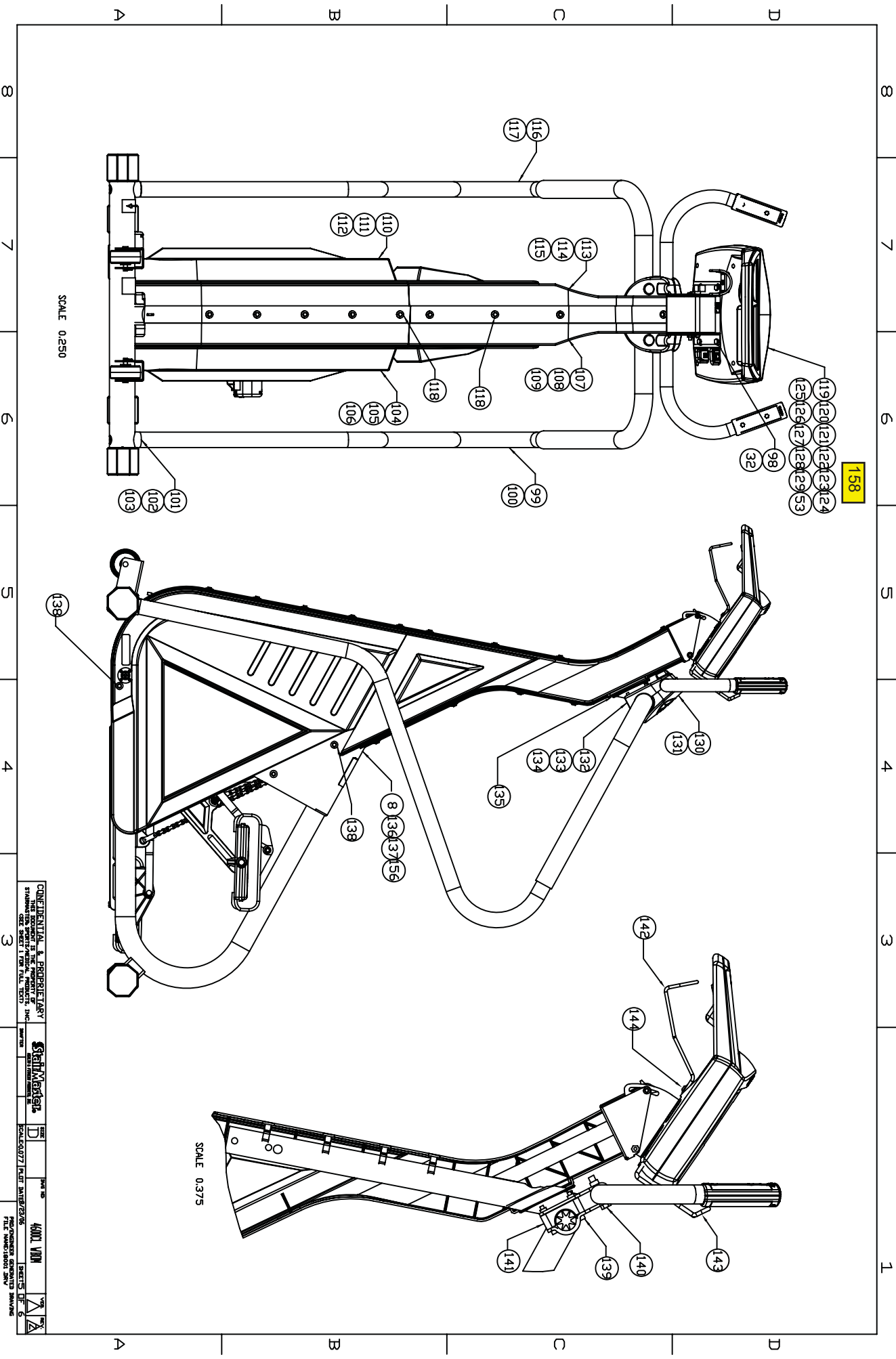


158

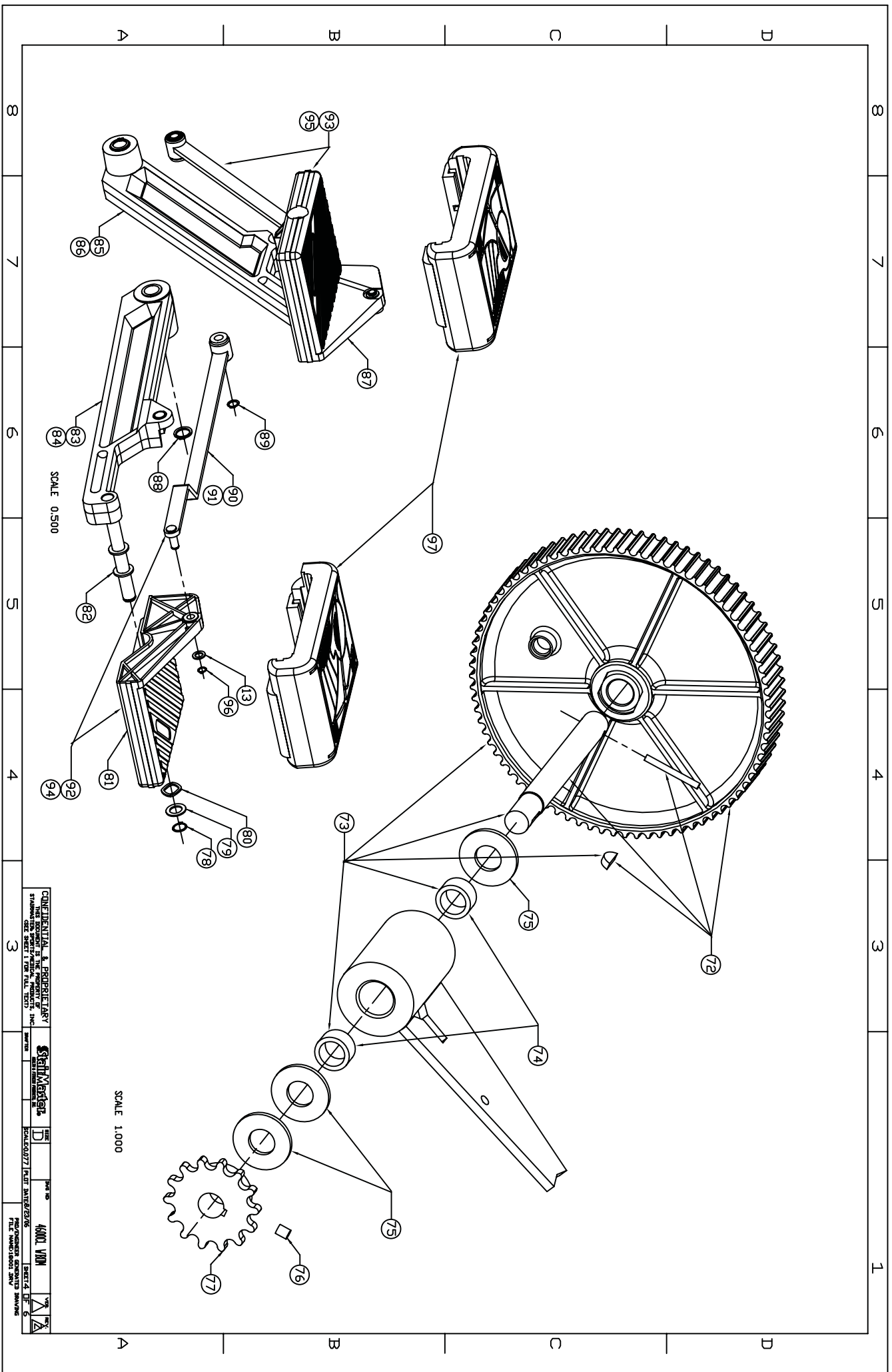
SCALE 0.250



SCALE 0.375



CONFIDENTIAL & PROPRIETARY  
 THIS DOCUMENT IS THE PROPERTY OF INTC  
 STRONGARM CORP. SHEET 1 FROM FILE 15371  
 4001 VHM  
 SHEETS 5  
 FILE NUMBER 15371



SCALE 1.000

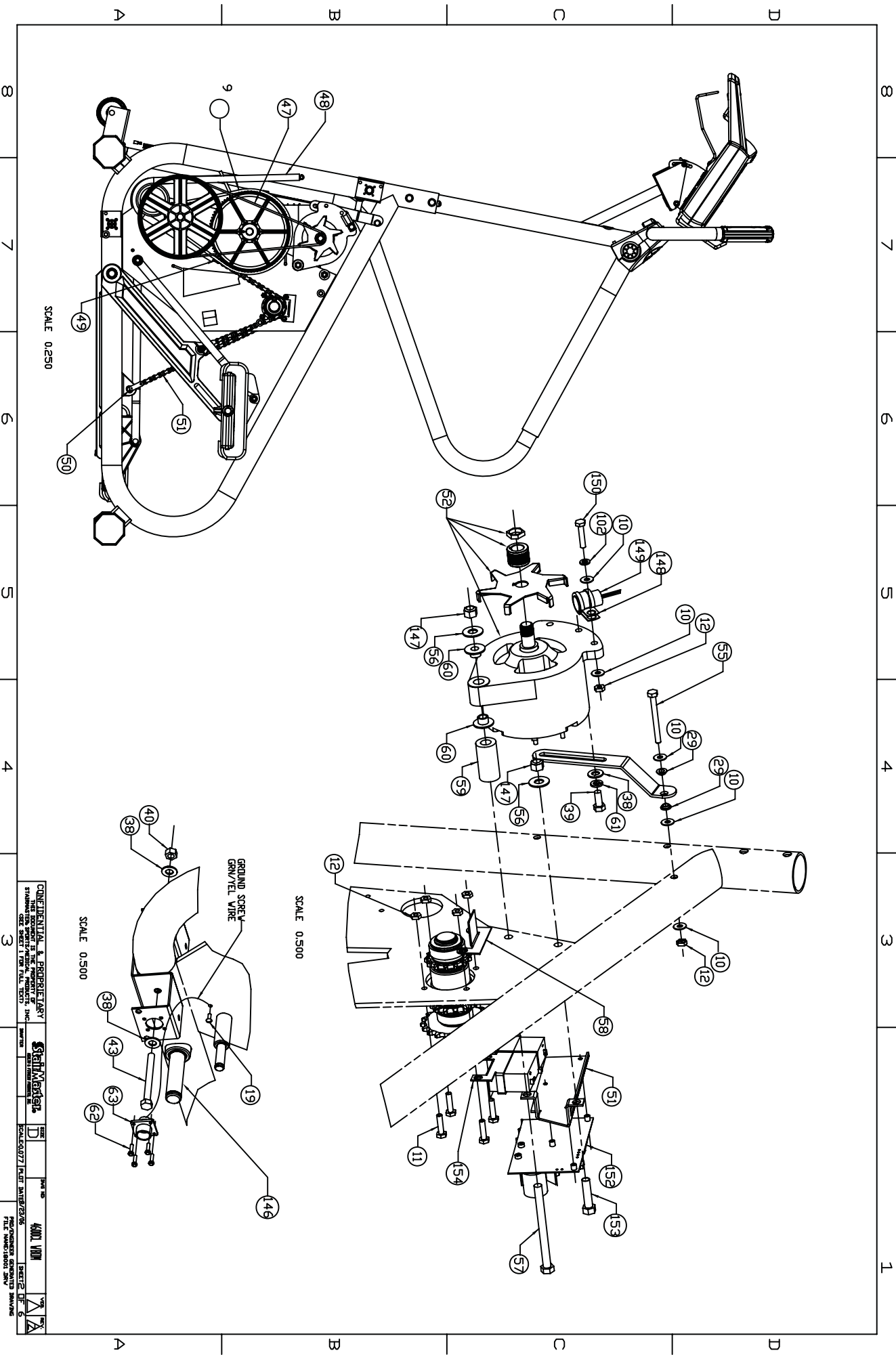
SCALE 0.500

CONFIDENTIAL & PROPRIETARY  
 THIS DOCUMENT IS THE PROPERTY OF INTC  
 STRONG & TIMBERLAND, INC.  
 CHIEF SHEET / FROM FILE TEST

DATE	REV	BY	APP
10/10/07	1	AMM	AMM

PROJECT: 4001 VMM  
 SHEET: 5  
 FILE: 40010005.DWG





CONFIDENTIAL & PROPRIETARY  
 THIS DOCUMENT IS THE PROPERTY OF INTC  
 STRANER  
 DESK SHEET 1 FROM FILE TEST1

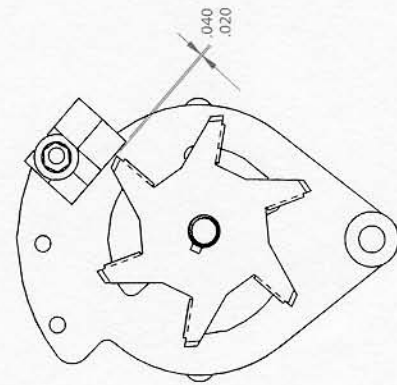
DATE	REV	BY	APP
10/10/07	1	AMT/25/05	AMT

4001 VHM  
 FILE NUMBER: 4001 VHM  
 FILE NUMBER: 4001 VHM

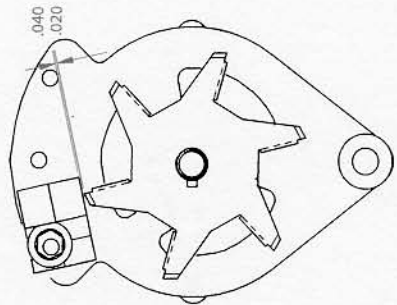
# SPEED SENSOR REPLACEMENT INSTRUCTIONS

- STEP 1. DISCONNECT THE SENSOR FROM THE POWER BOARD PCB.
- STEP 2. REMOVE THE ORIGINAL SENSOR, CLAMP, AND HARDWARE SECURING THE SENSOR TO THE ALTERNATOR.
- STEP 3. DISCARD THE PARTS REMOVED IN STEP 2.
- STEP 4. PLACE NEW SPEED SENSOR ON THE ALTERNATOR, ADJUST THE DISTANCE FROM THE EDGE OF THE DISK FAN TO THE END OF THE SENSOR, AND SECURE WITH NEW HARDWARE INCLUDED IN THE KIT AS SHOWN IN DIAGRAM 1.

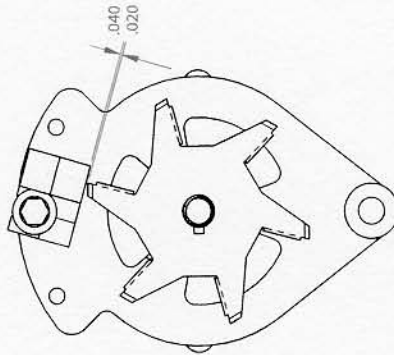
**NOTE: PLACE A SMALL DROP OF LOCTITE ON THE SCREW THREADS BEFORE TIGHTNING.**



STEPPER



U/R916



ELLIPTICAL

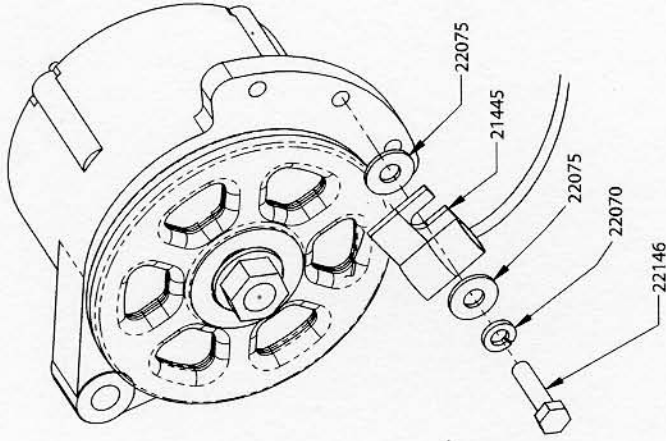
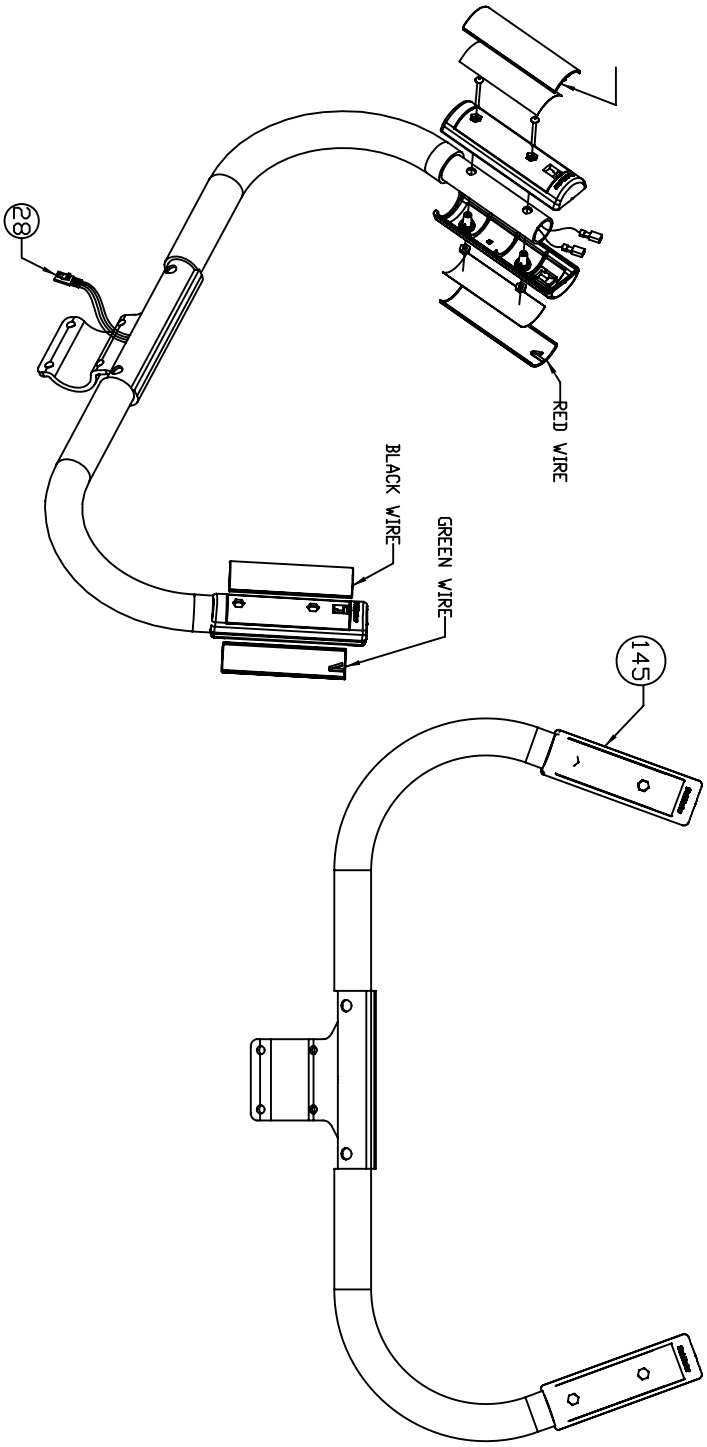


DIAGRAM 1  
(ELLIPTICAL ALTERNATOR SHOWN AS EXAMPLE)

- IMPORTANT: 1. A FLAT WASHER MUST BE BETWEEN THE SENSOR AND ALTERNATOR, SO THE FAN BLADE MAY BE ALIGNED PROPERLY UNDER THE SENSOR.**
2. BOTTOM OF SENSOR TO EDGE OF FAN BLADE DISTANCE (CREDIT CARD THICKNESS).
  3. TORQUE BOLT TO 70 in/lbs (8 Nm) WHEN SECURING THE SENSOR, OTHERWISE SENSOR WILL CRACK.

NOTES:  
1. CONNECT WIRES TO CONTACT PLATES AS SHOWN



REV	DESCRIPTION	DATE	INITIALS
1	RELEASED FOR PRODUCTION PER ECO #8114	9/6/01	RH
2	REVISED PER ECO #8347	4/23/02	RH
3	REVISED PER ECO #8736	6/20/03	RH
4	REVISED PER ECO #90390	12/23/03	RH

TOLERANCES	ANGLES
X .41	90°
XX .403	90°
XXX .400	90°

UNLESS OTHERWISE SPECIFIED:  
1. DO NOT SCALE DRAWING  
2. ALL DIMENSIONS ARE IN INCHES  
3. ALL DIMENSIONS APPLY TO THE SURFACE UNLESS OTHERWISE NOTED  
4. DIMENSIONS TO CENTERLINE UNLESS OTHERWISE NOTED  
5. ALL VIEWS 90° ANGLE PROJECTION

FINISH	MATERIAL
N/A	N/A

**StaffMaster** HEALTH & FITNESS PRODUCTS, INC.

ASSEMBLY, HANDLE, UPPER, 4600, GEN II

RELEASED FOR PRODUCTION PER ECO #8114

DATE: 12/23/03

FILE NUMBER: 4600CL W/BIM

PRO/ENGINEER GENERATED DRAWING

4 3 2

## 4600CL, WBOM, DOM/INT'L, BLK/GRY/SILVER

SKU: #SM180003 #SM188003 #SM188003B-GRY #SM180303 #SM180103 #SM188103

<u>REF. NO.</u>	<u>PART NO:</u>	<u>DESCRIPTION</u>
1	SM12297-03	ASSEMBLY HANDLE, UPPER 4600, <b>BLK</b>
2	SM25592	ASSY,HNDLE,UPPER,STPPR,NLS, <b>SILVER</b>
3	SM21415	ASSY,MAIN CABLE,CLMB SYS,CL,HM PRE 8/00
4	SM27828	ASSY CABLE, C40 4400/4600 CL <b>AFTER 8/00</b>
5	SM18002-03	WELDMENT,NECK,4600, <b>BLK</b>
6	SM25594	WELDMENT,NECK,STEPPER,NLS, <b>SILVER</b>
7	SM21590-03	BRACE,ALTERNATOR,4400 PT/CL,WB
8	SM24953-07	ASSY,MID COVER W/DECALS, <b>GRY</b>
9	SM21529	BELT,HTD,8MM,800MM LONG
10	SM22047	WASHER,FLAT,1/4 ID X 5/8 OD
11	SM22026	SCREW,.250-20X1.00,HEX HD CAP
12	SM22036	NUT,.250-20,NYLON INSERT
13	SM21462	WASHER,FLAT,.38,SS
14	SM21519	PULLEY,SPRING,4200/4400
15	SM22143	RING,SNAP, 3/8"
16	SM25978	WHEEL, 3" DIA.
17	SM21774	PIN,HITCH
18	SM22326	PIN,CLEVIS
19	SM22150	SCREW,#10-24 X .38 ZINC PLATED
20	SM18029-03	(CS)MAINFRAME,STD,4600, <b>BLK</b>
21	SM18032-03	(CS)MAINFRAME,INT,4600, <b>BLK</b>
22	SM25872	(CS)MAINFRAME,STD,4600, <b>SILVER</b>
23	SM25873	(CS)MAINFRAME,INT'L,4600, <b>SILVER</b>
24	SM20188	MOUNT, SHOCK
25	SM20008	LINK,MASTER,#41
26	SM22347	CHAIN,TRANSMISSION,4200/4400
27	SM27839	SUPPRESSOR, FERRITE TOROID
28	SM27840	ASSY CABLE, CONTACT HR 4600
29	SM22983	WASHER,SHOULDER,.25 ID,NYLON
30	SM21449	SCREW,.250-20 X 4.50 HEX HD CP
31	SM18027	ASSY,CONSOLE KNOB,4600
32	SM22138	WASHER,.250 INTERNL TOOTH LOCK
33	SM18006-03	BRACKET,CONSOLE,RIGHT,4600
34	SM25530	BRACKT,CONSOL,LEFT,4600.NLS, <b>SILVER</b>
35	SM18007	BRACKET,CONSOLE,LEFT,4600
36	SM25529	BRACKT,CONSLE,RIGHT,4600,NLS, <b>SILVER</b>
37	SM21616	INSERT,NECK,2400/4400
38	SM22075	WASHER,.312 USS FLAT
39	SM22093	SCREW,.312-18X.75,HEX HD CAP
40	SM22032	NUT,5/16-18 NC NYLON INSRT HEX
41	SM23054	NUT,#8-32,NYLON INSERT
42	SM13580	WASHER,#8 SAE FLAT
43	SM24271	SCREW,.312-18X3.00,HEX HD CAP
44	SM21447	ASSY.,RESISTOR,CLIMB.SYS,CL
45	SM23609	WASHER,FLAT,#8 FENDER,
46	SM25079	SCREW,8-32 NC X .62 PHIL PAN
47	SM21518	BELT,POLY-V,430J6
48	SM21093	SPRING, PEDAL RETURN

49	SM20157	KIT,MASTER LINK
50	SM21298	LINK, DOUBLE PITCH W/SLEEVE
51	SM20199	CHAIN,STEP CHN4ON P 37
52	SM22536	(CS)ASY,ALT,POLYV,4400CL,W/DSK
53	SM27801	KIT, C40 OVERLAY, JAPANESE ( <b>BLACK CONSOLE</b> )
54	SM20205	ALTERNATOR,PRESTOLITE,1992 ( <b>DOMESTIC ONLY</b> )
55	SM22175	SCREW,.250-20X3.00,HEX HD CAP
56	SM22030	WASHER, 3/8 USS FLAT
57	SM21448	SCREW,.375-16 x 4.50 HEX HD CP
58	SM21192	RETAINER, PEDAL CHAIN
59	SM21592-05	SPACER,ALTERNATOR,4400 PT/CL
60	SM22191	WASHER,SHOULDER,.38 I.D.
61	SM22070	WASHER,.312 SPIT LOCK
62	SM22663	SCREW,#6 X .50 PHIL,TYPE T
63	SM13597	ASSY,MAIN POWER,4400CL
64	SM24666-03	BRACKET,MNT,CVR,CL SYS,CL,W/B
65	SM25845	BRACKET,MNT,CVR,CL SYS,CL, <b>SILVER</b>
66	SM20198	BEARING, THRUST
67	SM10382	ASSY, SPROCKET LH
68	SM10400	(CS)ASSY,DRIVE,HUB
69	SM10383	ASSY, SPROCKET RH
70	SM10485	(CS)ASSY,DRIVE HUB & SHAFT
71	SM24897	(CS)ASSY,ECCENTRIC SHAFT
72	SM22618	(CS)ASSY,SPROCKET,80T
73	SM40216	KIT,FIRST REDUCTION
74	SM24747	BEARING,NEDL,DRWN CUP,17x23x12
75	SM21657	WASHER,.688 I.D. X .125 THICK
76	SM22878	SCREW,SET,SOCKET,.250-28 X .38
77	SM20006	SPROCKET, BS14 #41 CHAIN
78	SM22141	RING,SNAP,5/8",ZINC PLATED
79	SM22140	WASHER,FLAT 1.00 OD X .63 ID
80	SM12446	WASHER,WAVE,.751 I.D.
81	SM21793	ASSY,PEDAL,RH,CL SYS,V2
82	SM21366	WASHER,THRUST,.63 ID
83	SM10989-03	(CS)ASSY,ARM,PEDAL,RH,PB, <b>BLK</b>
84	SM25568	ASSY,ARM,PEDAL,RH,NLS, <b>SILVER</b>
85	SM10990-03	(CS)ASSY,ARM,PEDAL,LH, <b>BLK</b>
86	SM25567	ASSY,ARM,PEDAL,LH,NLS, <b>SILVER</b>
87	SM21794	ASSY,PEDAL,LH,CL SYS,V2
88	SM20213	RING, SNAP 3/4"
89	SM20214	RING, SNAP 3/8"
90	SM25569	ASSY,ARM,LEVELING,NLS, <b>SILVER</b>
91	SM10991-03	CS)ASSY,ARM,LEVELING, <b>BLACK</b>
92	SM21285K	KIT, LEVELING ARM UPGRADE, RT, <b>BLK</b>
93	SM21286K	KIT, LEVELING ARM UPGRADE, LT, <b>BLK</b>
94	SM25874	KIT,LEVELING ARM,W/PEDAL,RH, <b>SILVER</b>
95	SM25875	KIT,LEVELING ARM,W/PEDAL,LH, <b>SILVER</b>
96	SM25894	RING,SNAP,3/8", <b>HEAVY DUTY</b>
97	SM18054	PADS, PEDAL, SET
98	SM25454	BOLT, 1/4-20 X .75, HEX HEAD
99	SM18016-03	ASSY,LEFT HANDRAIL,4600, <b>BLK</b>
100	SM25595	ASSY,LH HANDRAIL,NLS, <b>SILVER</b>
101	SM20574	ADAPTER,HANDRAIL, 4000 PT/CT
102	SM22027	WASHER,.250 SPLIT LOCK
103	SM22116	SCREW,.250-20X2.50,HEX HD CAP



104	SM16747	KIT,LH,LOWER COVER,4600CL, <b>GRY</b>
105	SM18051-06	(CS)COVER,LH W/DECAL,4600CL, <b>BLK</b>
106	SM25882	(CS)CVR,W/DECAL,LH,4600CL, <b>CHARCOAL GREY</b>
107	SM18025-06	COVER,LEFT NECK,4600, <b>BLK</b>
108	SM18025-07	COVER,LEFT NECK,4600, <b>GRY</b>
109	SM25519	COVER,LEFT NECK,STEPPER, <b>CHARCOAL GREY</b>
110	SM16746	KIT,RH,LOWER COVER,4600CL, <b>GRY</b>
111	SM18050-06	(CS)COVER,RH W/DECAL,4600CL, <b>BLK</b>
112	SM25881	(CS)CVR,W/DECAL,RH,4600CL, <b>CHARCOAL GREY</b>
113	SM18024-06	COVER,RIGHT NECK,4600, <b>BLK</b>
114	SM18024-07	COVER,RIGHT NECK,4600, <b>GRY</b>
115	SM25518	COVER,RIGHT NECK,STEPPER, <b>CHARCOAL GREY</b>
116	SM18017-03	ASSY,RIGHT HANDRAIL,4600, <b>BLK</b>
117	SM25596	ASSY,RH HANDRAIL,NLS,SV, <b>SILVER</b>
118	SM22847	RIVET KIT (10 PER)
119	SM27819-20	XONSOLE,ASSEMBLY,ICHR C40, <b>BLK</b>
120	SM27819-99	CONSOLE ASSY,ICHR C40,INTERN, <b>BLK</b>
121	SM27819-90	CONSOLE, ASSY,ICHR, CJ40, JAP, <b>BLK</b>
122	SM27819GRY-99	CONSOLE ASSY,ICHR C40,INT, <b>GRY</b>
123	SM25844	ASSY,CONSOLE,ICHR C40,NLS, <b>CHARCOAL GREY</b>
124	SM40070-001	PCBA, DISPLAY, CJ40
125	SM27130	PCB ASSY,C40 PROCESS(M128)NON-
126	SM27767	IC, CONTACT HR W/MOUNT HEADER
127	SM25877	KIT,C40 OVERLAY, ( <b>CHARCOAL GREY CONSOLE</b> )
128	SM27792	KIT, C40 OVERLAY ( <b>BLACK CONSOLE</b> )
129	SM27793	KIT, C40 OVERLAY, INT'L , ( <b>INT'L BLACK CONSOLE</b> )
130	SM18030	SHIELD, TOP,4600, <b>BLK</b>
131	SM25513	SHIELD, TOP,STEPPER,NLS, <b>CHARCOAL GREY</b>
132	SM18031	SHIELD,BOTTOM,4600, <b>BLK</b>
133	SM25512	SHIELD,BOTTOM,STEPPER,NLS, <b>CHARCOAL GREY</b>
134	SM22276	SCREW,#6 S.T. X .625 HEX OR TO
135	SM21578	GROMMET,NECK,2400/4400
136	SM24954-06	(CS)COVER,MID,W/DECALS, <b>BLK</b>
137	SM25880	(CS)CVR,MID,W/DECAL, <b>CHARCOAL GREY</b>
138	SM22086	RIVET,PANELS, PLASTIC
139	SM18028	SCREW,.250-20NC X 1.75 SOC CAP
140	SM22258	SCREW,.375-16x2.00,HEX HD CAP
141	SM18008	ADAPTER,HANDRAIL,4600
142	SM27783-03	WIREFORM ASSY, WATER BOTTLE
143	SM27791-03	WIREFORM,MAGAZINE HOLDER
144	SM25244	SCREW,.250-20X.50 BUTTON HD CP
145	SM12294K	ICHR, GEN II
146	SM24888	SHAFT,ARM,PEDAL,PRESSFIT
147	SM22029	NUT,.375-16,NYLON INSERT
148	SM22884	CLAMP,CABLE,11/16" DIA.
149	SM21445	ASSY.,SPEED SENSOR,CLIM.SYS,CL
150	SM22164	SCREW,.250-20X1.25,HEX HD CAP
151	SM21468-03	BRCKT,MNTING,PCB,4400CL,WB
152	SM24983	ASSY,POWER CONTROL BD,4400 CL
153	SM22257	SCREW,.375-16X1.50,HEX HD CAP
154	SM21489	BRACKET,MOUNTING,BATTERY
155	SM14123	BATTERY,6V
156	SM25075-06	(CS)COVER,MID,W/DECALS,,JPN, <b>BLK</b>
157	SM22900	ALTERNATOR,PRESTOLITE,RoHS, ( <b>INT'L ONLY</b> )
NOT SHOWN	SM20859	POWER ADAPTER, 3 PRONG/2 PRONG

NOT SHOWN	SM11022	ASSY,POWER SUPPLY,JPN,CL
NOT SHOWN	SM22890	MANUAL,USER GUIDE,4600CL,JAPAN
NOT SHOWN	SM22867	MANUAL 4600 C-40
NOT SHOWN	SM23853	TOOL, REMOVAL, COVER FASTENERS
NOT SHOWN	SM25067	ASSY.,BC-1,PS
NOT SHOWN	SM22898	ADDENDUM,MANUAL,FREECLIMR, <b>SILVER</b>
158	SM25892SLV	KIT, C40 OVERLAY, JAPAN,SLVR